



Unit 3 Plants

Name: Date:

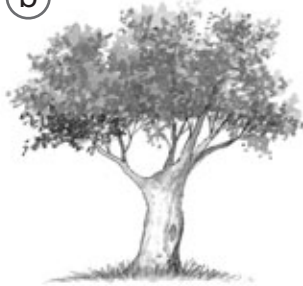
1. Write three characteristics that are common to all plants.

2. Which picture shows a *tree*, *shrub* or *grass*? Explain why.

(a)



(b)



(c)



3. Classify these plants as *plants with flowers* or *plants without flowers*. Then write if they reproduce with *seeds* or *spores*.

- a) fern: _____
- b) apple tree: _____
- c) wheat: _____
- d) moss: _____

4. Explain what plants use to make their own food.

5. Match the three columns.

- | | | | | | | |
|----------------------------------|---|---|------------|---|---|----------------|
| water and minerals from the soil | • | • | phloem sap | • | • | xylem vessels |
| carbon dioxide and xylem sap | • | • | xylem sap | • | • | phloem vessels |



Unit 3 Plants

Name: Date:

6. What is photosynthesis?

7. Add the missing words. Draw lines to match the phrases with the diagram of photosynthesis.

a) _____

b) _____ sap

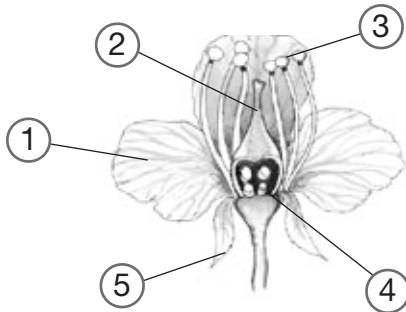
c) _____ sap



d) Carbon _____
from the air

e) _____
is produced

8. Label the parts of the plant.



1. _____
2. _____
3. _____
4. _____
5. _____

9. Match the three columns.

- | | | | | | | |
|---------|---|---|---------------------------|---|---|-------------------------|
| pistil | • | • | male reproductive organ | • | • | It makes up the calyx. |
| stamen | • | • | group of coloured leaves | • | • | It has ovules inside. |
| sepals | • | • | female reproductive organ | • | • | It produces pollen. |
| corolla | • | • | small green leaves | • | • | They are called petals. |

10. Complete the sentences.

fertilisation fruit seeds ovule pollination pollen

• Grains of pollen are transported from the stamens to the pistil. This is called _____. After that, _____ occurs, which is when the grain of _____ joins the _____. Afterwards, the pistil gets bigger and becomes a _____. Inside of it you can find _____. If the conditions are right, the seeds grow into a new plant.